

IAC Sound insulating curtain

IAC Sound insulating curtain is both sound-absorbing and sound-damping. The sound-absorbing curtain (approx. 3500 g/m²) has been developed to regulate room acoustics by providing varying amounts of sound-absorbing surface. An unfolded curtain provides high sound attenuation, while a folded curtain creates more sound in the room. Sound insulating curtains are used e.g. in music halls, assembly halls, conference rooms and concert halls.

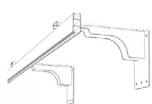
In addition to the sound-insulating curtain's unique sound-absorbing properties, it is also sound-insulating between rooms. It can be used to divide a room, screen off a disturbing sound source or supplement a door that is acoustically inferior. The sound curtain reduces the sound by approximately 12 dB, which gives a perceived halving of the sound level.



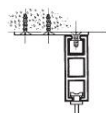
Assembly

The sound curtain is mounted in a rail system on the wall or in the ceiling.

Mounting Options



Wall



Ceiling

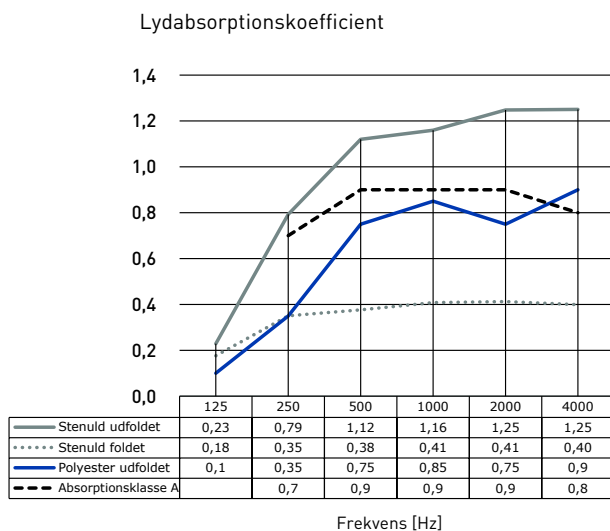


Suspended



Support rod
A/E edge

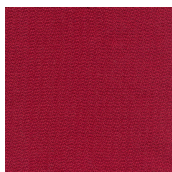
Absorption



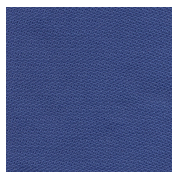
Værdier i diagrammet viser lydabsorptionsareal pr. objekt målt efter rummetoden. Lydgardin 2,4x1,4 m var til absorptionsmåling monteret fladt ophængt, 150 mm. fra væggen. Diagrammet viser også gardinets lydabsorberende område, foldet.

Materiale

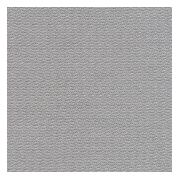
- ◇ Stenuldskerne eller polyesterkerne af høj densitet
- ◇ Kollektion Esmeralda: Trevira stof



Vinrød



Blå



Grå

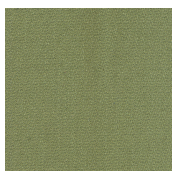


Beige



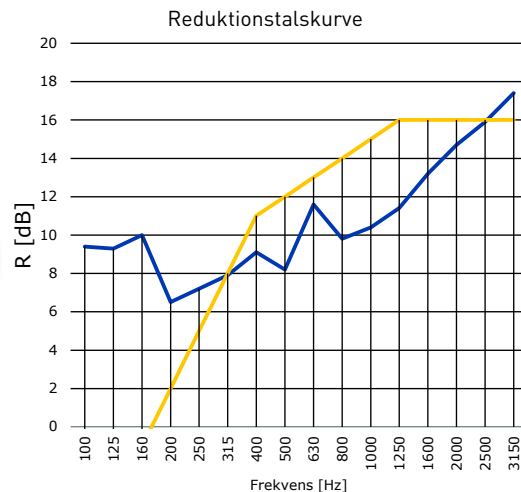
Sort

- ◇ Kollektion Ivar: Økologisk bomuld blandet med hør (udgået)



Grøn

Reduktion



Lydgardinets lydisoleringsevne måles som et reduktionstal, $R_w=12$ dB. Reduktionstalskurven viser den lydisolierende fordel for det respektive frekvensbånd (Hz).

Miljø & holdbarhed

- ◇ Nem at flytte og samle igen, hvis det er nødvendigt
- ◇ Reservedele er altid på lager
- ◇ Genanvendelig kerne via Rewool
- ◇ Sunda Hus, bedømmelse B
- ◇ Trevira stoffet og polyesterkerne er godkendt iflg. Oeko Tex[®] Standard 100

Brandmodstand

- ◇ Stenuldskerne: A1 (Euroklass)
- ◇ Polyesterkerne: B-s1,d0 (Euroklass)
- ◇ Overfladelag Esmeralda: B1 (DIN 4102)

Emissioner

- ◇ Kerneemissioner i indeklima: M1

Bestilling

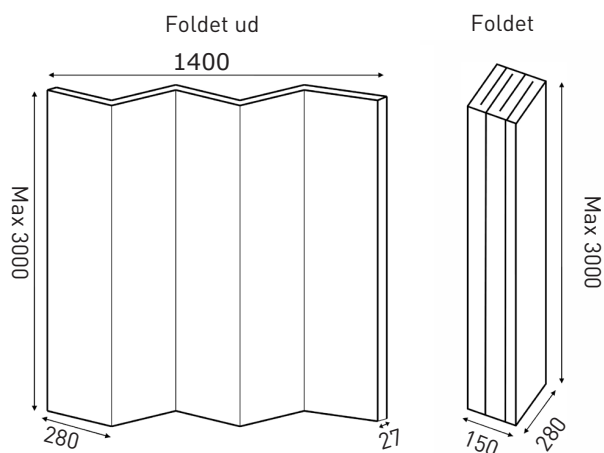
IAC Lydisolerende gardin, kombineret med monteringshøjde, farve, kerne og monteringsmetode

Rengøring

- ◇ Muligt at støvsuge med en blød dyse, børste med en tør, blød børste og tørre af med en godt opredet klud eller svamp.

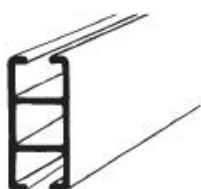
Format

- ◇ 1400 x er specifik højde x 27 mm (max højde 3000 mm)

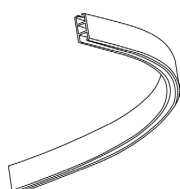


(mm)

Skinner, beslag og tilbehør



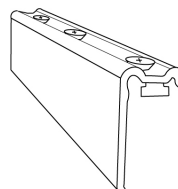
Gardinskinne
Fås som 1,5 m og 3 m



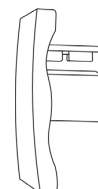
Skinnebøjning



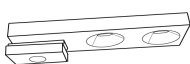
S-skinne
Muliggør montering tæt på væggen



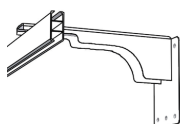
Skinnesamling
Forbinder flere skinner



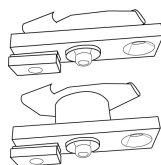
Endestopper
Endestopper for gardinskinne



Loftbeslag
1 stk beslag per 60 cm



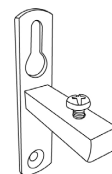
Vægbeslag
1 stk beslag per 60 cm



Bærestangsbeslag
Fås til A & E kant



Loftsvedhæng
Sænker gardinskinnen 30, 60 eller 100 cm



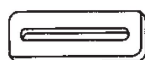
Nichebeslag
Til at fastgøre enden af skinnen til væggen



Trækstang
Til at flytte gardinet i skinnen



Dreje stopper
Forhindrer uønsket bevægelse af gardinet



Loft afstandsplade
Giver loftbeslaget 6 mm afstand, f.eks. i eksisterende installationer