

Product Description

The design of the BRB captive mount makes the rubber work in both shear and compression with an optimum balance between flexibility and horizontal stability. The relatively high height of the BRB range offers great flexibility, low natural frequencies and excellent vibration isolation.

This range of captive mounts is used, where the number 1 priority is vibration isolation.

Technical Characteristics

- Top metal cap protects the rubber against fuel and oil
- Metal parts are electro galvanised for long life
- Designed as a secured mount to ensure that the top and bottom mounting plates are always connected, even when subjected to high shock loads
- The base plate is marked with mount type and hardness, making them easy to identify even after many years of use

Applications

The product is tailored to mobile and marine plant equipment that require high vibration isolation and good stability. BRB mounts are also suitable for isolation of axial and radial shock.

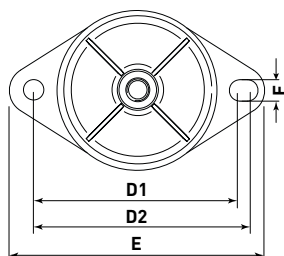
This mount can also be used for passive isolation of equipment that is near or on machines that vibrate. It could be a control or fuse box that has to be both protected against vibrations and at the same time be secured from falling.

The captive mount design provides good protection of the rubber against dripping oil and fuel and also gives protection against UV light. The BRB mount also provides excellent vibration isolation to marine and mobile plant equipment, compressors, pumps and fans etc.

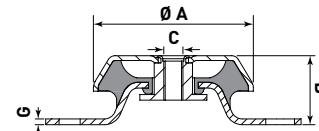
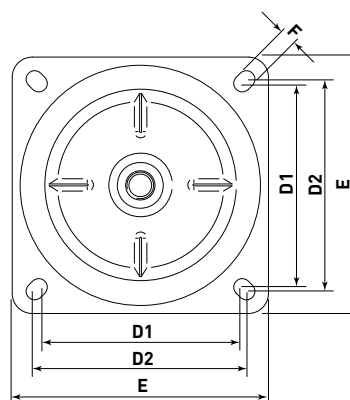


Type	40 Sh. Max Load (kg)	50 Sh. Max Load (kg)	60 Sh. Max Load (kg)	70 Sh. Max Load (kg)
BRB50	20	40	60	80
BRB60	30	45	65	75
BRB65	50	75	120	140
BRB70	50	75	120	140
BRB80 M10	80	130	175	235
BRB80 M12	80	130	175	235
BRB110 M12	200	305	420	450
BRB110 M16	200	305	420	450
BRB125	310	450	700	900
BRB150	450	570	800	1000
BRB180	875	1110	1700	2630
BRB220	1600	2400	3400	4200

BRB050
BRB060
BRB065
BRB070
BRB080
BRB110
BRB150

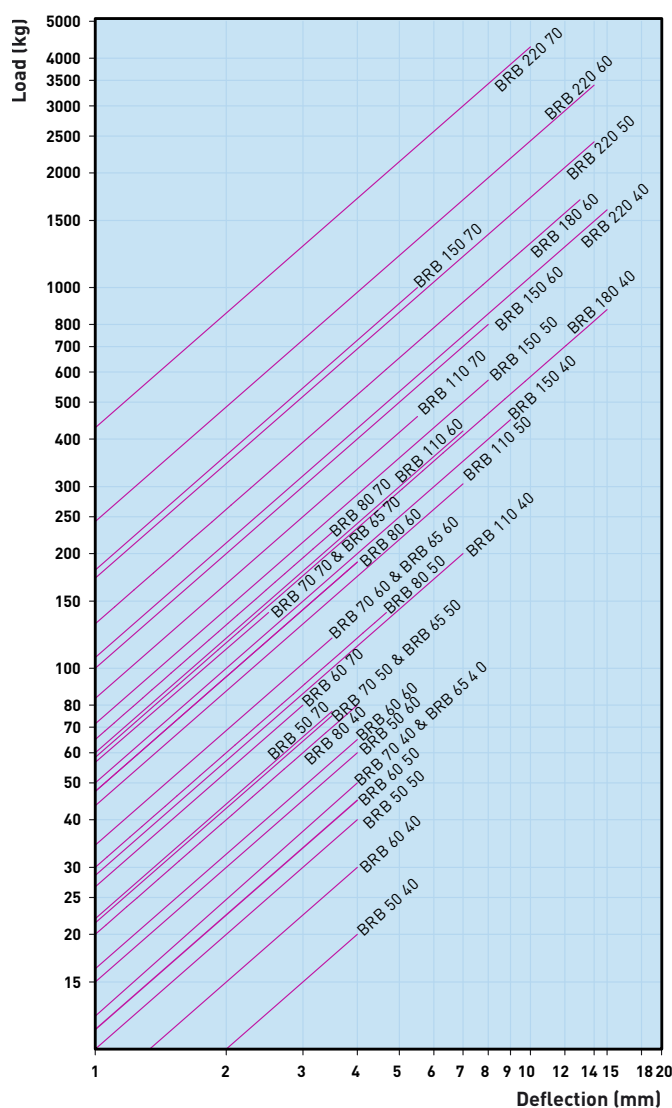
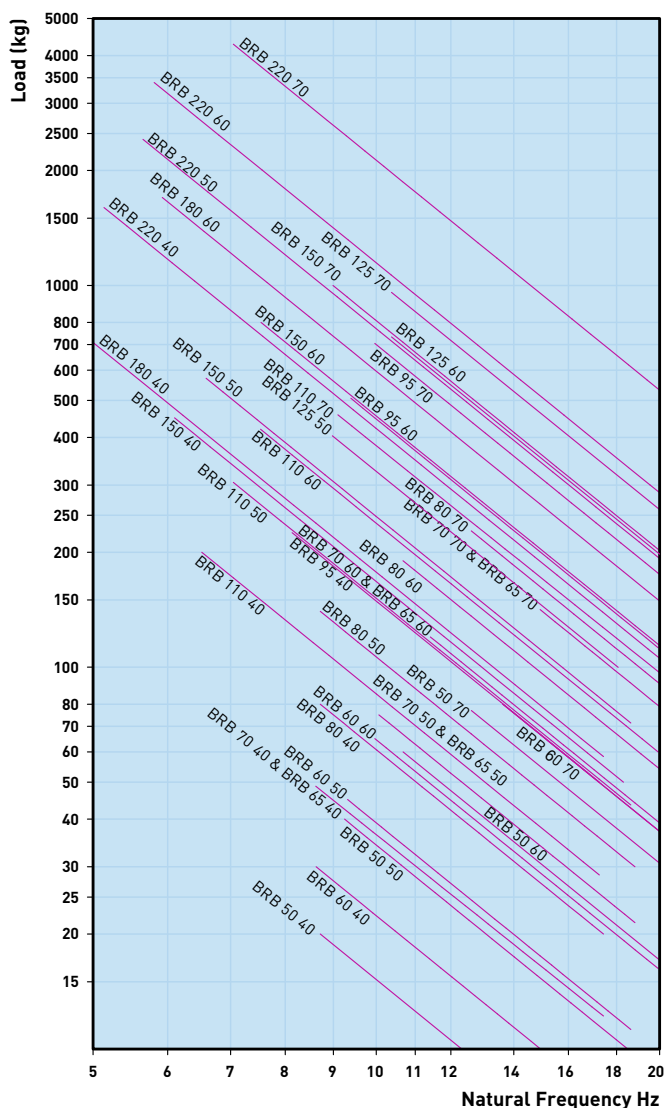


BRB125
BRB150
BRB180
BRB220



Deflection, Static Load

BRB



Type	A Ø (mm)	B (mm)	C	D1 (mm)	D2 (mm)	E (mm)	F (mm)	G (mm)	Weight (g)
BRB50	50	25	M8	63	70	85	6.5	2	100
BRB60	64	35	M10	76	91	110	9	2.5	225
BRB65	65	35	M10/M12	76	91	110	9	2.5	243
BRB70	65	35	M12	100	-	120	11	3	253
BRB80 M10	83	35	M10	108	110	130	9	3	398
BRB80 M12	83	35	M12	108	110	130	9	3	398
BRB110 M12	106	41	M12	137	149	170	12.5	3.5	857
BRB110 M16	106	41	M16	137	149	170	12.5	3.5	857
BRB125	123	48	M16	154	162	190	14	4	1170
BRB150	155	53.5	M16	176	188	218	14.5	4	1840
BRB150 RECT	155	53.5	M16	125	132	164	14.5	4	2030
BRB180	183	86	M20	146	146	180	14.5	5	3100
BRB220	225	105	M24	180	-	220	18.5	6	6716

BRB70 and BRB180 have round mounting holes, not slotted.