

Chassis mounts

SCH

Product Description

The SCH mount consists of two rubber parts, where one in the centre of the mount also has a metal tube imbedded that reduces wear on the rubber and gives longer life.

Technical characteristics

This vibration damper is ideal for use where there are large dynamic loads, and where much stability is required. This could, for example be under the cab of many types of vehicles. SCH offers, in addition to optimal stability good damping of shock and vibrations.

Applications

- Caps
- Agricultural and forestry machinery

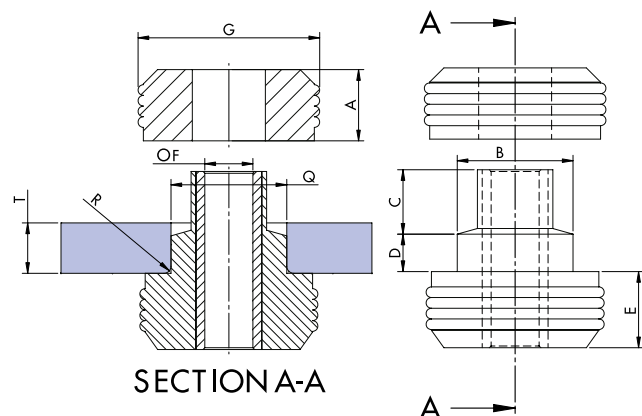
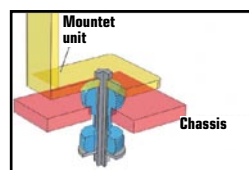
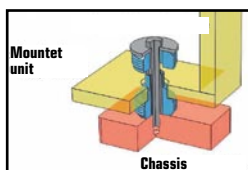
Sample guide

SCH attenuator should be assembled according to the following installation instructions:

There are two possible configurations, please see installation 1, where the table's recommendations dimensions for the assembly plate shall be followed. They can be installed in plates of varying thicknesses depending on T_{max} and T_{min} values as indicated in the table at the bottom of the page. The damper deflection curve will vary in response to mounting plate thickness.



Installation 1 Fitted with washers



Washers delivered upon request

Washers dimensions in mm

Ref	Ø ext.	Ø int.	Thickness
SCH 50	54	13,5	4
SCH 65	67	16,5	5
SCH 90	96	22	6

Dimensions of the mounting plate

Ref	R mm	Q Ø mm	Plate thickness	
			Tmax	Tmin
SCH 50	1,5	31,8	14	12,5
SCH 65	2,5	38,5	22	19
SCH 90	3	54,5	29	25

Type	A mm	B Ø mm	C mm	D mm	E mm	F Ø mm	G Ø mm	Load kg 45 Sh.	Load kg 60 Sh.	Weight g
SCH 50	20	32,5	18,1	10,5	21,4	13,5	48	80	130	153
SCH 65	22,5	39,5	24	15	23	16,5	64	120	260	350
SCH 90	25	56	29	19	25	22,5	90	260	450	675

Chassis mounts

SCH

