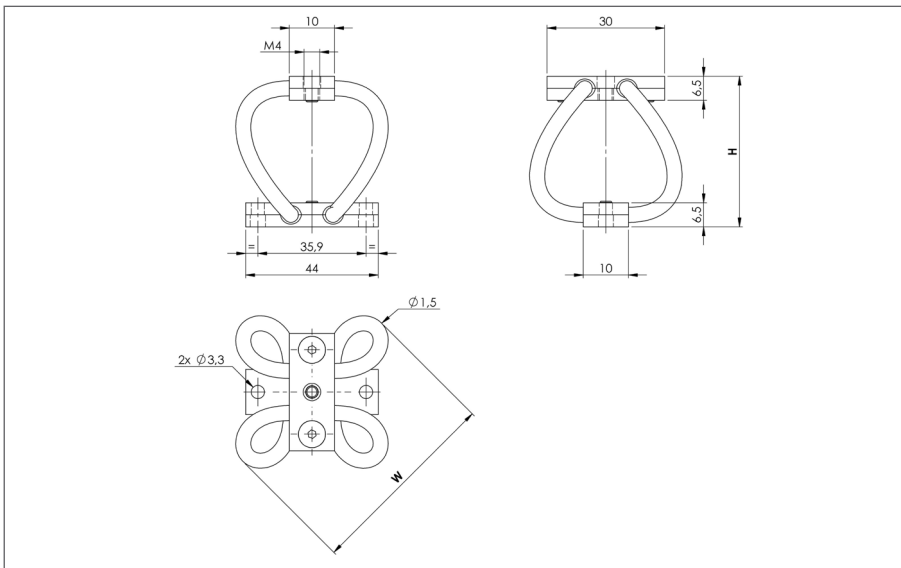


WIRE ROPE ISOLATORS: MACHINED LINE "POLYCAL"

PERFORMANCES
series AP2/SP2



- All metal multidirectional anti-vibration/shock mounts.
- Exceptional reliability and long life.
- High damping.
- No ageing.
- Corrosion resistant.
- Unequalled temperature range : -180°C +300°C.
- Cheap and quick prototypes from stock.

Dimensions are in mm. For reference only.

SERIES Materials and finishes	
AP2 Cable: stainless steel. Bars: aluminium alloy/surtec 650. Screws: Alloy steel/zinc plate (Inserts: alloy steel/zinc plate)	SP2 Cable: stainless steel. Bars: stainless steel. Screws: stainless steel.
Other materials on request	

MODEL	AP2	SP2		
	height h (mm)	width w (mm)	mass (kg)	mass (kg)
-30	15	24	0,011	0,025
-35	17	25	0,011	0,025
-40	18	27	0,012	0,026
-45	20	29	0,012	0,026
-50	21	30	0,012	0,027

EXAMPLE
AP2-35



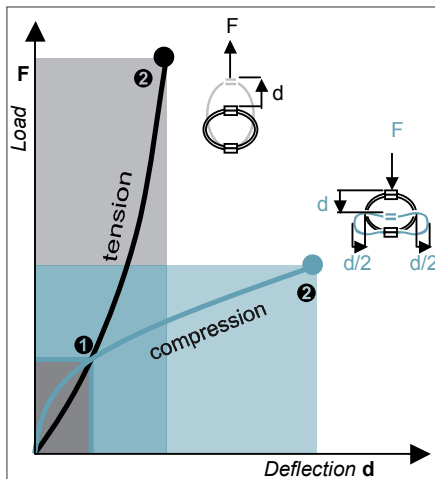
PREFIX:
machined 'Polycal'
mount
from the AP2 series

MODEL: -35
height: 17 mm
width: 25 mm
mass: 0,011 kg



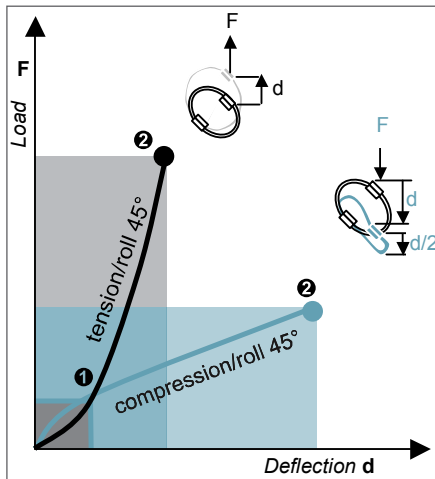
WIRE ROPE ISOLATORS: MACHINED LINE "POLYCAL"

PERFORMANCES
series AP2/SP2



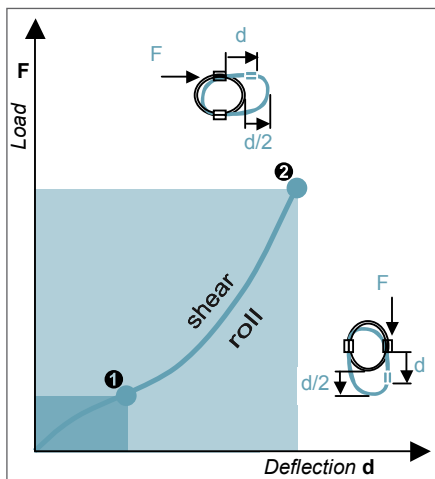
COMPRESSION AND TENSION

AP2/SP2 Series	Model	-30	-35	-40	-45	-50			
1. Max Static	F daN	0,7	0,7	0,6	0,5	0,5			
	d mm	0,7	1,0	1,2	1,5	1,7			
2. Max Shock	F daN	2	2	2	1	1			
	d mm	4	5	6	8	9			
3. Max Vibration	2a mm	0,4	0,6	0,7	0,9	1,0			
	f Hz	23	18	17	15	14			
1. Max Static	F daN	0,7	0,7	0,6	0,5	0,5			
	d mm	0,5	0,8	0,9	1,2	1,3			
2. Max Shock	F daN	5	4	4	3	3			
	d mm	2	3	3	4	5			
3. Max Vibration	2a mm	0,2	0,3	0,4	0,5	0,5			
	f Hz	30	23	21	19	17			



COMPRESSION/ROLL 45° - TENSION/ROLL 45°

AP2/SP2 Series	Model	-30	-35	-40	-45	-50			
1. Max Static	F daN	0,5	0,5	0,4	0,4	0,3			
	d mm	0,9	1,4	1,6	2,1	2,3			
2. Max Shock	F daN	1	1	1	1	1			
	d mm	5	8	9	11	13			
3. Max Vibration	2a mm	0,6	0,8	1,0	1,3	1,4			
	f Hz	19	15	14	12	11			
1. Max Static	F daN	0,4	0,4	0,4	0,3	0,3			
	d mm	0,6	1,0	1,1	1,4	1,6			
2. Max Shock	F daN	3	3	3	2	2			
	d mm	2	3	4	5	6			
3. Max Vibration	2a mm	0,3	0,4	0,4	0,6	0,6			
	f Hz	26	21	19	17	16			



SHEAR OR ROLL

AP2/SP2 Series	Model	-30	-35	-40	-45	-50			
1. Max Static	F daN	0,3	0,3	0,3	0,2	0,2			
	d mm	1,1	1,7	2,0	2,6	2,8			
2. Max Shock	F daN	2	2	2	1	1			
	d mm	4	6	7	9	9			
3. Max Vibration	2a mm	0,5	0,7	0,8	1,0	1,1			
	f Hz	19	15	14	12	11			

1. Max static load (F) with corresponding deflection (d)
2. Max shock load (F) with corresponding deflection (d)
3. Uncoupled resonant frequency (f) under max static loading 1. and max peak to peak sinusoidal vibration input (2a)

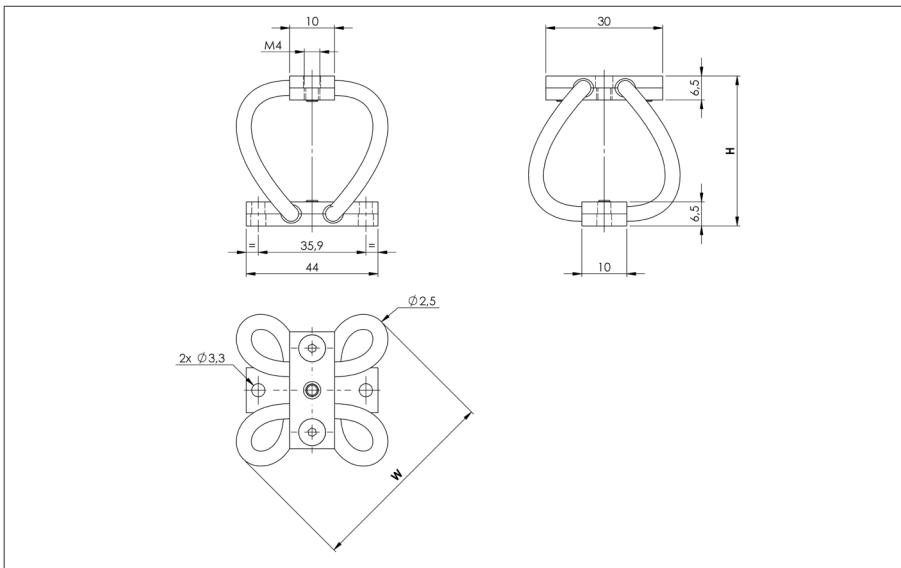
* IMPORTANT: Performance characteristics are given here for reference only. They can be increased under specific conditions. **Contact us.**

TYPICAL SHOCK/VIBRATION SPECIFICATIONS:

Ground Forces	GAM EG13A, SEFT 001, MIL-STD-810, VG 95332.
Air	AIR 7306, MIL-E-5400, MIL-C-172, MIL-STD-810.
Marine	GAM EG13C, IT25-21/96-31/15-86, MIL-S-167, MIL-S-901, STANAG 042, BV 043.73, BV 044.
Others	GAM EMB1, GAM EMBT4, DEF STAN 07-55, IEC 571, FINABEL 2C.

WIRE ROPE ISOLATORS: MACHINED LINE "POLYCAL"

PERFORMANCES
series AP3/SP3



- All metal multidirectional anti-vibration/shock mounts.
- Exceptional reliability and long life.
- High damping.
- No ageing.
- Corrosion resistant.
- Unequalled temperature range : -180°C +300°C.
- Cheap and quick prototypes from stock.

Dimensions are in mm. For reference only.

SERIES Materials and finishes	
AP3 Cable: stainless steel. Bars: aluminium alloy/surtec 650. Screws: Alloy steel/zinc plate (Inserts: alloy steel/zinc plate)	SP3 Cable: stainless steel. Bars: stainless steel. Screws: stainless steel.
Other materials on request	

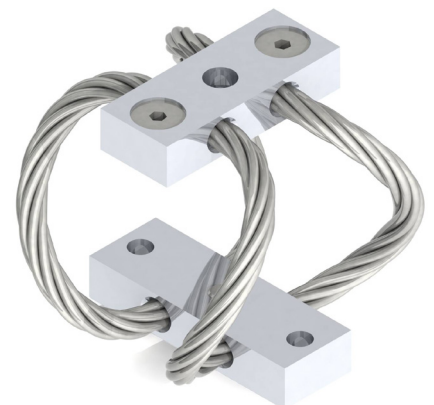
MODEL	AP3		SP3	
	height h (mm)	width w (mm)	mass (kg)	mass (kg)
-40	19	30	0,019	0,041
-50	22	33	0,020	0,042
-60	26	36	0,021	0,043
-70	29	40	0,022	0,044
-80	32	43	0,023	0,045

EXAMPLE
AP3-40



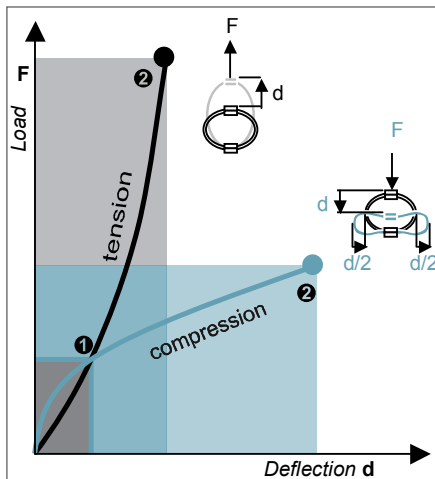
PREFIX:
machined 'Polycal'
mount
from the AP3 series

MODEL: -40
height: 19 mm
width: 30 mm
mass: 0,019 kg



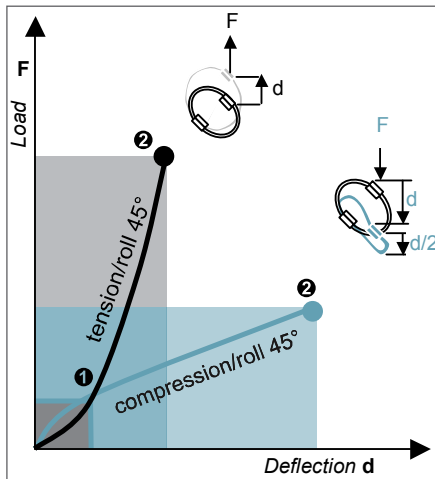
WIRE ROPE ISOLATORS: MACHINED LINE “POLYCAL”

PERFORMANCES
series AP3/SP3



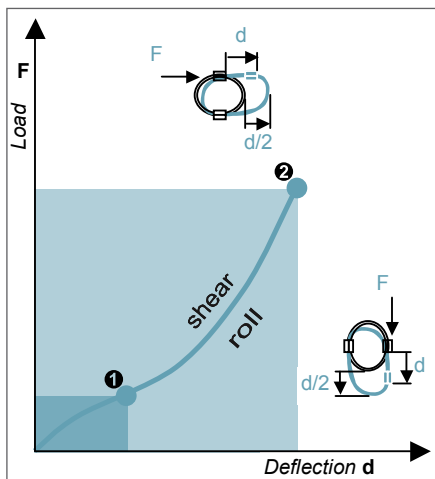
COMPRESSION AND TENSION

AP3/SP3 Series	Model	-40	-50	-60	-70	-80			
1. Max Static	F daN	2,8	2,4	2,0	1,6	1,4			
	d mm	1,0	1,5	2,2	2,7	3,2			
2. Max Shock	F daN	8	7	6	5	4			
	d mm	5	8	12	14	17			
3. Max Vibration	2a mm	0,6	0,9	1,3	1,6	1,9			
	f Hz	18	15	12	10	10			
1. Max Static	F daN	2,8	2,4	2,0	1,6	1,4			
	d mm	0,8	1,2	1,7	2,1	2,5			
2. Max Shock	F daN	19	16	13	11	10			
	d mm	3	4	6	7	9			
3. Max Vibration	2a mm	0,3	0,5	0,7	0,8	1,0			
	f Hz	23	19	15	13	12			



COMPRESSION/ROLL 45° - TENSION/ROLL 45°

AP3/SP3 Series	Model	-40	-50	-60	-70	-80			
1. Max Static	F daN	2,0	1,7	1,4	1,2	1,0			
	d mm	1,4	2,1	3,1	3,8	4,5			
2. Max Shock	F daN	6	5	4	3	13			
	d mm	8	11	17	20	24			
3. Max Vibration	2a mm	0,8	1,3	1,8	2,3	2,7			
	f Hz	15	12	10	9	8			
1. Max Static	F daN	1,8	1,5	1,3	1,1	0,9			
	d mm	1,0	1,4	2,1	2,5	3,0			
2. Max Shock	F daN	13	11	9	8	7			
	d mm	3	5	7	9	11			
3. Max Vibration	2a mm	0,4	0,6	0,8	1,0	1,2			
	f Hz	21	17	13	12	11			



SHEAR OR ROLL

AP3/SP3 Series	Model	-40	-50	-60	-70	-80			
1. Max Static	F daN	1,3	1,1	1,0	0,8	0,7			
	d mm	1,7	2,6	3,7	4,6	5,4			
2. Max Shock	F daN	8	7	6	5	4			
	d mm	6	9	12	15	18			
3. Max Vibration	2a mm	0,7	1,0	1,5	1,8	2,2			
	f Hz	15	12	10	9	8			

1. Max static load (F) with corresponding deflection (d)
2. Max shock load (F) with corresponding deflection (d)
3. Uncoupled resonant frequency (f) under max static loading 1. and max peak to peak sinusoidal vibration input (2a)

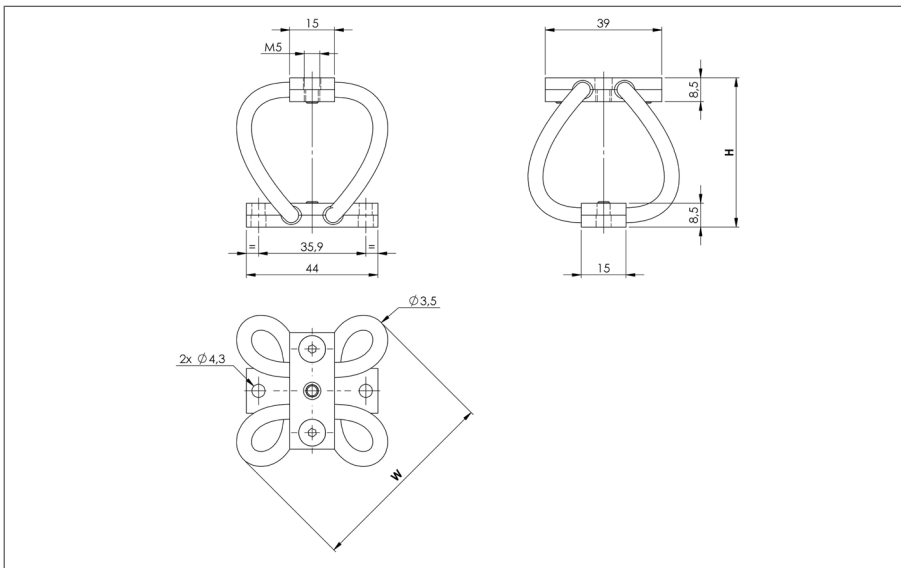
* IMPORTANT: Performance characteristics are given here for reference only. They can be increased under specific conditions. **Contact us.**

TYPICAL SHOCK/VIBRATION SPECIFICATIONS:

Ground Forces	GAM EG13A, SEFT 001, MIL-STD-810, VG 95332.
Air	AIR 7306, MIL-E-5400, MIL-C-172, MIL-STD-810.
Marine	GAM EG13C, IT25-21/96-31/15-86, MIL-S-167, MIL-S-901, STANAG 042, BV 043.73, BV 044.
Others	GAM EMB1, GAM EMBT4, DEF STAN 07-55, IEC 571, FINABEL 2C.

WIRE ROPE ISOLATORS: MACHINED LINE "POLYCAL"

PERFORMANCES
series AP4/SP4



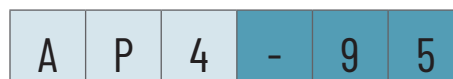
- All metal multidirectional anti-vibration/shock mounts.
- Exceptional reliability and long life.
- High damping.
- No ageing.
- Corrosion resistant.
- Unequalled temperature range : -180°C +300°C.
- Cheap and quick prototypes from stock.

Dimensions are in mm. For reference only.

SERIES Materials and finishes	
AP4 Cable: stainless steel. Bars: aluminium alloy/surtec 650. Screws: Alloy steel/zinc plate (Inserts: alloy steel/zinc plate)	SP4 Cable: stainless steel. Bars: stainless steel. Screws: stainless steel.
Other materials on request	

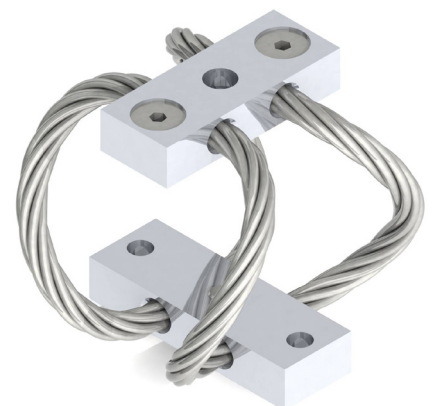
MODEL	AP4		SP4	
	height h (mm)	width w (mm)	mass (kg)	mass (kg)
-65	29	44	0,034	0,064
-75	32	47	0,036	0,066
-85	36	50	0,037	0,067
-95	39	54	0,039	0,069
-110	44	58	0,041	0,071
-125	47	64	0,043	0,074

EXAMPLE
AP4-95



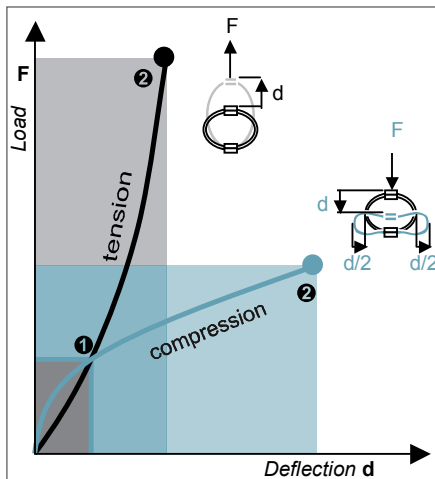
PREFIX:
machined 'Polycal'
mount
from the AP4 series

MODEL: -95
height: 39 mm
width: 54 mm
mass: 0,039 kg



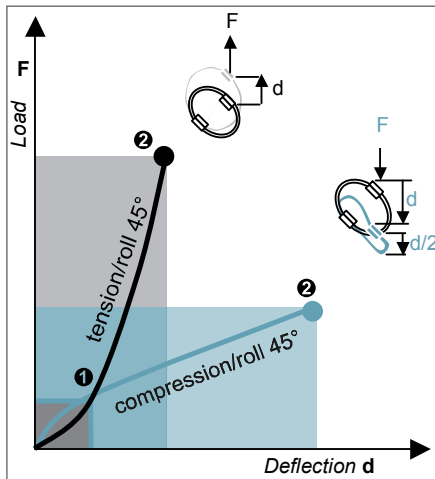
WIRE ROPE ISOLATORS: MACHINED LINE “POLYCAL”

PERFORMANCES
series AP4/SP4



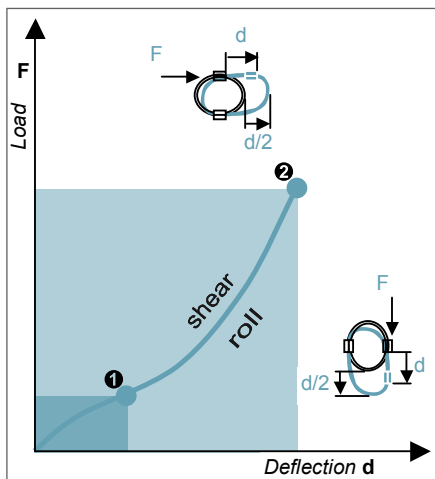
COMPRESSION AND TENSION

AP4/SP4 Series	Model	-65	-75	-85	-95	-110	-125		
1. Max Static	F daN	4,6	4,1	3,6	3,1	2,7	2,1		
	d mm	2,0	2,5	3,2	3,7	4,5	5,0		
2. Max Shock	F daN	14	12	11	9	8	6		
	d mm	11	14	17	20	24	27		
3. Max Vibration	2a mm	1,2	1,5	1,9	2,2	2,7	3,0		
	f Hz	12	11	10	9	8	7		
1. Max Static	F daN	4,6	4,1	3,6	3,1	2,7	2,1		
	d mm	1,6	2,0	2,5	2,9	3,5	3,6		
2. Max Shock	F daN	31	27	24	21	18	17		
	d mm	5	7	9	10	12	14		
3. Max Vibration	2a mm	0,6	0,8	1,0	1,2	1,4	1,6		
	f Hz	16	14	12	11	10	11		



COMPRESSION/ROLL 45° - TENSION/ROLL 45°

AP4/SP4 Series	Model	-65	-75	-85	-95	-110	-125		
1. Max Static	F daN	3,3	2,9	2,5	2,2	1,9	1,6		
	d mm	2,8	3,5	4,5	5,2	6,3	7,0		
2. Max Shock	F daN	10	9	8	7	6	4		
	d mm	15	19	24	28	34	40		
3. Max Vibration	2a mm	1,7	2,1	2,7	3,1	3,8	4,5		
	f Hz	10	9	8	7	6	6		
1. Max Static	F daN	3,0	2,6	2,3	2,0	1,7	1,6		
	d mm	1,9	2,4	3,0	2,5	3,0	5,5		
2. Max Shock	F daN	21	19	17	8	7	13		
	d mm	7	9	11	9	11	19		
3. Max Vibration	2a mm	0,8	1,0	1,2	1,0	1,2	2,1		
	f Hz	14	12	11	12	11	9		



SHEAR OR ROLL

AP4/SP4 Series	Model	-65	-75	-85	-95	-110	-125		
1. Max Static	F daN	2,2	1,9	1,7	1,5	1,3	1,1		
	d mm	3,4	4,3	5,4	6,3	7,7	9,4		
2. Max Shock	F daN	14	12	11	9	8	6		
	d mm	11	14	18	21	26	25		
3. Max Vibration	2a mm	1,4	1,7	2,2	2,5	3,1	2,8		
	f Hz	10	9	8	7	6	8		

1. Max static load (F) with corresponding deflection (d)
2. Max shock load (F) with corresponding deflection (d)
3. Uncoupled resonant frequency (f) under max static loading 1. and max peak to peak sinusoidal vibration input (2a)

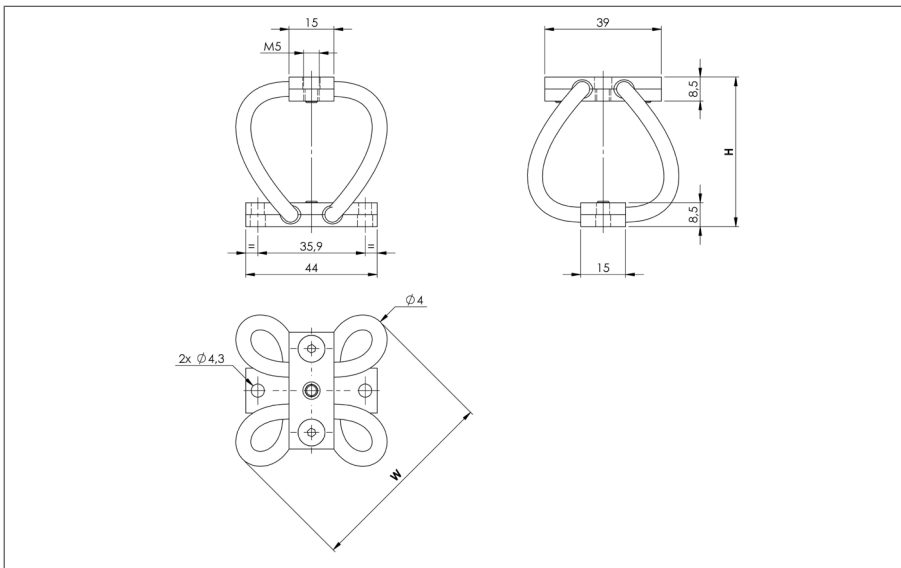
* IMPORTANT: Performance characteristics are given here for reference only. They can be increased under specific conditions. **Contact us.**

TYPICAL SHOCK/VIBRATION SPECIFICATIONS:

Ground Forces	GAM EG13A, SEFT 001, MIL-STD-810, VG 95332.
Air	AIR 7306, MIL-E-5400, MIL-C-172, MIL-STD-810.
Marine	GAM EG13C, IT25-21/96-31/15-86, MIL-S-167, MIL-S-901, STANAG 042, BV 043.73, BV 044.
Others	GAM EMB1, GAM EMBT4, DEF STAN 07-55, IEC 571, FINABEL 2C.

WIRE ROPE ISOLATORS: MACHINED LINE "POLYCAL"

PERFORMANCES
series AP5/SP5



- All metal multidirectional anti-vibration/shock mounts.
- Exceptional reliability and long life.
- High damping.
- No ageing.
- Corrosion resistant.
- Unequalled temperature range : -180°C +300°C.
- Cheap and quick prototypes from stock.

Dimensions are in mm. For reference only.

SERIES Materials and finishes	
AP5 Cable: stainless steel. Bars: aluminium alloy/surtec 650. Screws: Alloy steel/zinc plate (Inserts: alloy steel/zinc plate)	SP5 Cable: stainless steel. Bars: stainless steel. Screws: stainless steel.
Other materials on request	

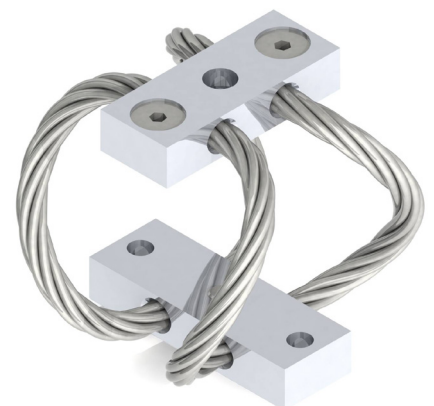
MODEL	AP5	SP5		
	height h (mm)	width w (mm)	mass (kg)	mass (kg)
-75	32	49	0,040	0,071
-85	36	52	0,042	0,072
-95	39	55	0,044	0,074
-110	44	60	0,047	0,078
-125	48	65	0,050	0,081

EXAMPLE
AP5-95



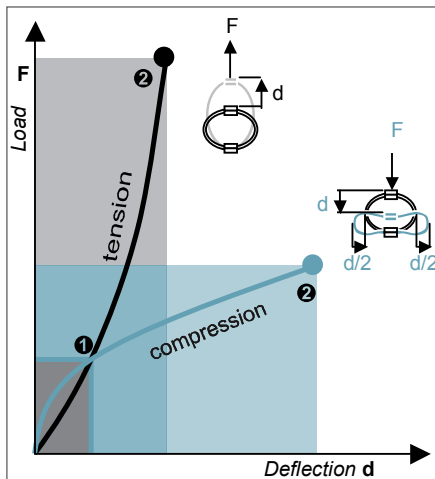
PREFIX:
machined 'Polycal'
mount
from the AP5 series

MODEL: -95
height: 39 mm
width: 55 mm
mass: 0,044 kg



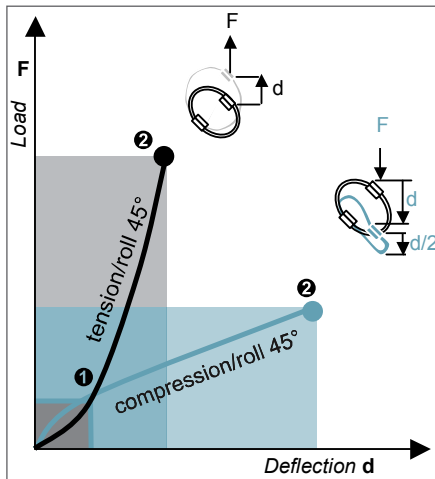
WIRE ROPE ISOLATORS: MACHINED LINE “POLYCAL”

PERFORMANCES
series AP5/SP5



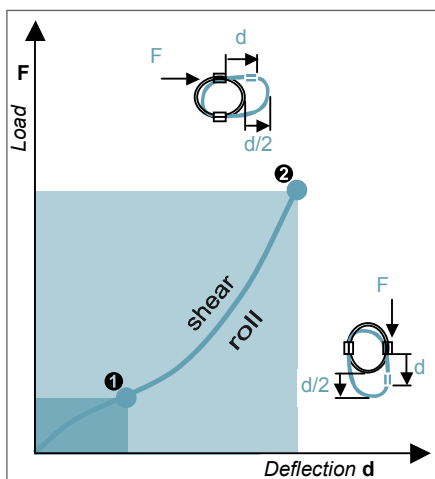
COMPRESSION AND TENSION

AP5/SP5 Series	Model	-75	-85	-95	-110	-125			
1. Max Static	F daN	6,7	5,9	5,3	4,4	3,8			
	d mm	2,5	3,2	3,7	4,5	5,1			
2. Max Shock	F daN	20	18	16	13	11			
	d mm	14	17	20	24	28			
3. Max Vibration	2a mm	1,5	1,9	2,2	2,7	3,1			
	f Hz	11	10	9	8	7			
1. Max Static	F daN	6,7	5,9	5,3	4,4	3,8			
	d mm	2,0	2,5	2,9	3,5	3,1			
2. Max Shock	F daN	45	40	35	30	25			
	d mm	7	9	10	12	14			
3. Max Vibration	2a mm	0,8	1,0	1,2	1,4	1,6			
	f Hz	14	12	11	10	9			



COMPRESSION/ROLL 45° - TENSION/ROLL 45°

AP5/SP5 Series	Model	-75	-85	-95	-110	-125			
1. Max Static	F daN	4,7	4,2	3,7	3,1	2,7			
	d mm	3,5	4,5	5,2	6,3	7,3			
2. Max Shock	F daN	14	13	11	9	8			
	d mm	19	24	28	34	39			
3. Max Vibration	2a mm	2,1	2,7	3,1	3,8	4,4			
	f Hz	9	8	7	6	6			
1. Max Static	F daN	4,3	3,8	3,4	2,8	2,4			
	d mm	2,4	3,0	3,5	4,3	4,9			
2. Max Shock	F daN	31	27	24	20	18			
	d mm	9	11	13	15	18			
3. Max Vibration	2a mm	1,0	1,2	1,4	1,7	2,0			
	f Hz	12	11	10	9	8			



SHEAR OR ROLL

AP5/SP5 Series	Model	-75	-85	-95	-110	-125			
1. Max Static	F daN	3,2	2,8	2,5	2,1	1,8			
	d mm	4,3	5,4	6,3	7,7	8,8			
2. Max Shock	F daN	20	18	16	13	11			
	d mm	14	18	21	26	29			
3. Max Vibration	2a mm	1,7	2,2	2,5	3,1	3,5			
	f Hz	9	8	7	6	6			

1. Max static load (F) with corresponding deflection (d)
2. Max shock load (F) with corresponding deflection (d)
3. Uncoupled resonant frequency (f) under max static loading 1. and max peak to peak sinusoidal vibration input (2a)

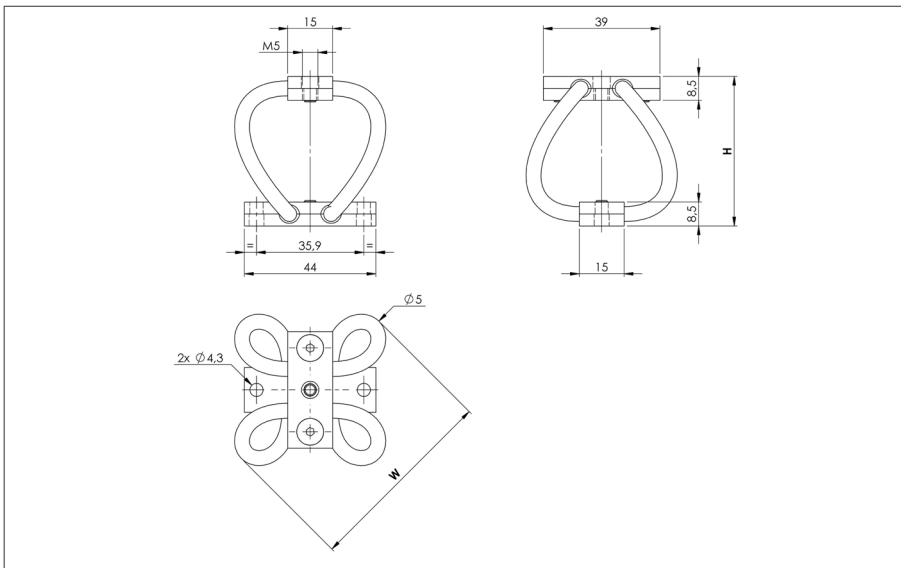
* **IMPORTANT:** Performance characteristics are given here for reference only. They can be increased under specific conditions. **Contact us.**

TYPICAL SHOCK/VIBRATION SPECIFICATIONS:

Ground Forces	GAM EG13A, SEFT 001, MIL-STD-810, VG 95332.
Air	AIR 7306, MIL-E-5400, MIL-C-172, MIL-STD-810.
Marine	GAM EG13C, IT25-21/96-31/15-86, MIL-S-167, MIL-S-901, STANAG 042, BV 043.73, BV 044.
Others	GAM EMB1, GAM EMBT4, DEF STAN 07-55, IEC 571, FINABEL 2C.

WIRE ROPE ISOLATORS: MACHINED LINE "POLYCAL"

PERFORMANCES
series AP6/SP6



- All metal multidirectional anti-vibration/shock mounts.
- Exceptional reliability and long life.
- High damping.
- No ageing.
- Corrosion resistant.
- Unequalled temperature range : -180°C +300°C.
- Cheap and quick prototypes from stock.

Dimensions are in mm. For reference only.

SERIES Materials and finishes	
AP6 Cable: stainless steel. Bars: aluminium alloy/surtec 650. Screws: Alloy steel/zinc plate (Inserts: alloy steel/zinc plate)	SP6 Cable: stainless steel. Bars: stainless steel. Screws: stainless steel.
Other materials on request	

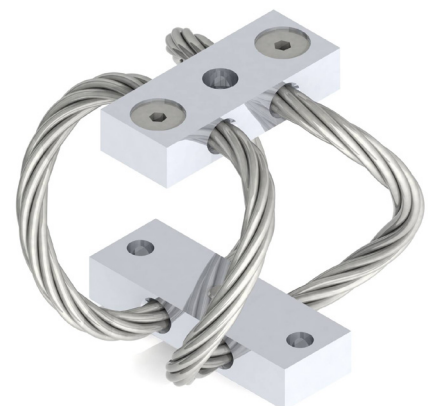
MODEL	AP6		SP6	
	height h (mm)	width w (mm)	mass (kg)	mass (kg)
-90	39	56	0,086	0,177
-105	44	60	0,097	0,182
-120	49	65	0,101	0,186
-140	55	72	0,107	0,192
-160	61	78	0,114	0,199
-195	73	84	0,120	0,204

EXAMPLE
AP6-90



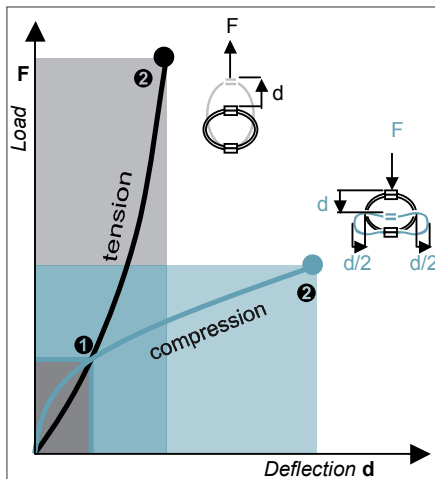
PREFIX:
machined 'Polycal'
mount
from the AP6 series

MODEL: -90
height: 39 mm
width: 56 mm
mass: 0,086 kg



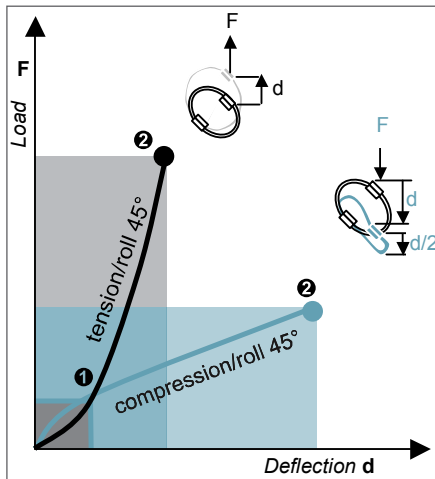
WIRE ROPE ISOLATORS: MACHINED LINE “POLYCAL”

PERFORMANCES
series AP6/SP6



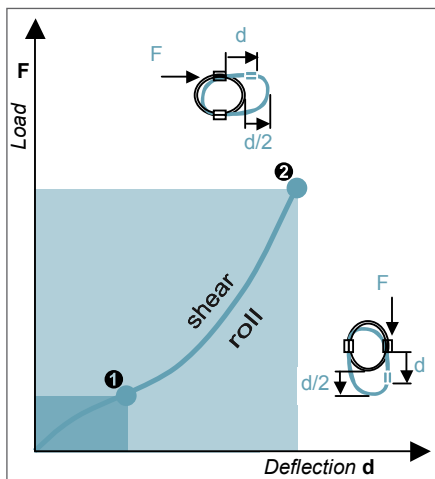
COMPRESSION AND TENSION

AP6/SP6 Series	Model	-90	-105	-120	-140	-160			
1. Max Static	F daN	11,4	10,0	8,6	7,1	6,2			
	d mm	3,0	3,8	4,6	5,6	6,6			
2. Max Shock	F daN	34	30	26	21	18			
	d mm	16	21	25	31	36			
3. Max Vibration	2a mm	1,8	2,3	2,8	3,4	4,0			
	f Hz	10	9	8	7	6			
1. Max Static	F daN	11,4	10,0	8,6	7,1	6,2			
	d mm	2,4	3,0	3,7	4,4	5,2			
2. Max Shock	F daN	76	67	58	48	41			
	d mm	8	10	13	15	18			
3. Max Vibration	2a mm	0,9	1,2	1,5	1,8	2,1			
	f Hz	12	11	10	9	8			



COMPRESSION/ROLL 45° - TENSION/ROLL 45°

AP6/SP6 Series	Model	-90	-105	-120	-140	-160			
1. Max Static	F daN	8,1	7,1	6,1	5,0	4,3			
	d mm	4,2	5,4	6,6	8,0	9,4			
2. Max Shock	F daN	24	21	18	15	13			
	d mm	23	29	36	43	51			
3. Max Vibration	2a mm	2,5	3,2	3,9	4,8	5,6			
	f Hz	8	7	6	6	5			
1. Max Static	F daN	7,3	6,4	5,5	4,6	4,0			
	d mm	2,9	3,7	4,5	5,4	6,4			
2. Max Shock	F daN	53	46	40	33	28			
	d mm	10	13	16	19	23			
3. Max Vibration	2a mm	1,1	1,5	1,8	2,2	2,5			
	f Hz	11	10	9	8	7			



SHEAR OR ROLL

AP6/SP6 Series	Model	-90	-105	-120	-140	-160			
1. Max Static	F daN	5,4	4,7	4,1	3,4	2,9			
	d mm	5,1	6,5	8,0	9,7	11,4			
2. Max Shock	F daN	34	30	26	21	18			
	d mm	17	22	26	32	38			
3. Max Vibration	2a mm	2,0	2,6	3,2	3,9	4,6			
	f Hz	8	7	6	6	5			

1. Max static load (F) with corresponding deflection (d)
2. Max shock load (F) with corresponding deflection (d)
3. Uncoupled resonant frequency (f) under max static loading 1. and max peak to peak sinusoidal vibration input (2a)

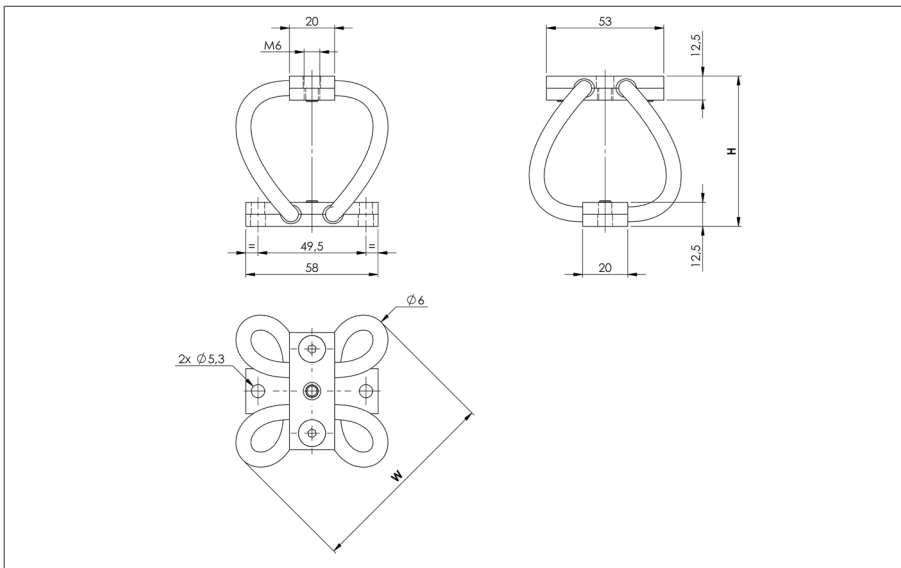
* **IMPORTANT:** Performance characteristics are given here for reference only. They can be increased under specific conditions. **Contact us.**

TYPICAL SHOCK/VIBRATION SPECIFICATIONS:

Ground Forces	GAM EG13A, SEFT 001, MIL-STD-810, VG 95332.
Air	AIR 7306, MIL-E-5400, MIL-C-172, MIL-STD-810.
Marine	GAM EG13C, IT25-21/96-31/15-86, MIL-S-167, MIL-S-901, STANAG 042, BV 043.73, BV 044.
Others	GAM EMB1, GAM EMBT4, DEF STAN 07-55, IEC 571, FINABEL 2C.

WIRE ROPE ISOLATORS: MACHINED LINE "POLYCAL"

PERFORMANCES
series AP8/SP8



- All metal multidirectional anti-vibration/shock mounts.
- Exceptional reliability and long life.
- High damping.
- No ageing.
- Corrosion resistant.
- Unequalled temperature range : -180°C +300°C.
- Cheap and quick prototypes from stock.

Dimensions are in mm. For reference only.

SERIES Materials and finishes	
AP8 Cable: stainless steel. Bars: aluminium alloy/surtec 650. Screws: Alloy steel/zinc plate (Inserts: alloy steel/zinc plate)	SP8 Cable: stainless steel. Bars: stainless steel. Screws: stainless steel.
Other materials on request	

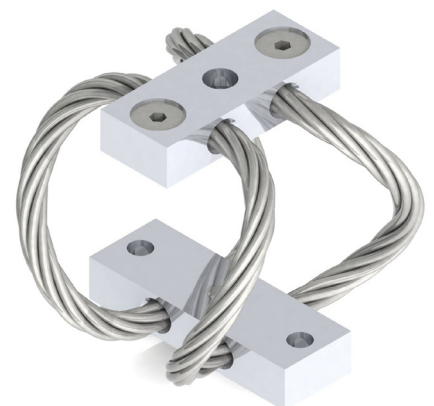
MODEL	AP8		SP8	
	height h (mm)	width w (mm)	mass (kg)	mass (kg)
-110	48	67	0,121	0,208
-125	52	72	0,128	0,213
-145	59	78	0,137	0,222
-165	65	85	0,146	0,231
-190	73	93	0,157	0,242

EXAMPLE
AP8-125



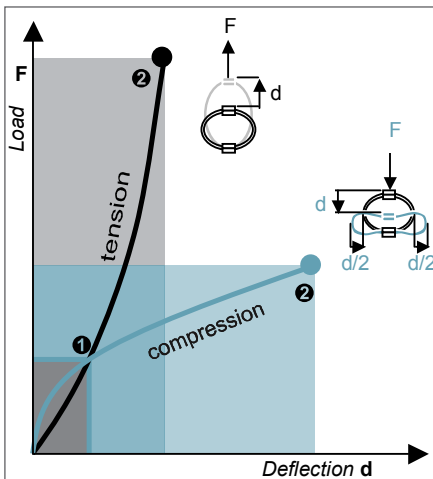
PREFIX:
machined 'Polycal'
mount
from the AP8 series

MODEL: -125
height: 52 mm
width: 72 mm
mass: 0,128 kg



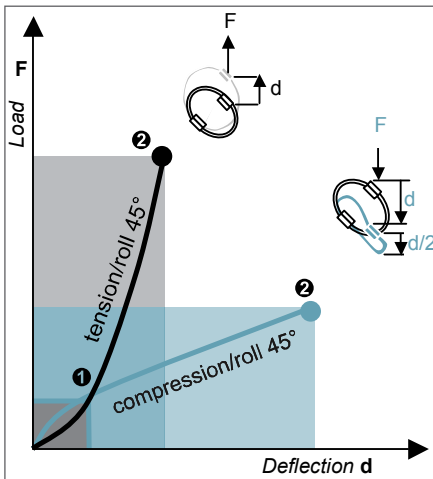
WIRE ROPE ISOLATORS: MACHINED LINE “POLYCAL”

PERFORMANCES
series AP8/SP8



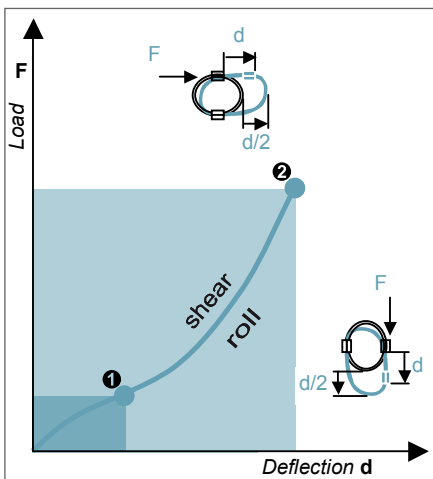
COMPRESSION AND TENSION

AP8/SP8 Series	Model	-110	-125	-145	-165	-190			
1. Max Static	F daN	14,8	12,9	11,1	9,5	8,0			
	d mm	3,8	4,5	5,6	6,6	8,0			
2. Max Shock	F daN	45	39	33	28	24			
	d mm	21	24	31	36	43			
3. Max Vibration	2a mm	2,3	2,7	3,4	4,0	4,8			
	f Hz	9	8	7	6	6			
1. Max Static	F daN	14,9	13,0	11,1	9,5	8,1			
	d mm	3,0	3,5	4,4	5,2	6,3			
2. Max Shock	F daN	100	87	74	64	54			
	d mm	10	12	15	18	22			
3. Max Vibration	2a mm	1,2	1,4	1,8	2,1	2,5			
	f Hz	11	10	9	8	7			



COMPRESSION/ROLL 45° - TENSION/ROLL 45°

AP8/SP8 Series	Model	-110	-125	-145	-165	-190			
1. Max Static	F daN	10,5	9,2	7,9	6,7	5,7			
	d mm	5,4	6,3	8,0	9,4	11,3			
2. Max Shock	F daN	31	27	24	20	17			
	d mm	29	34	43	51	61			
3. Max Vibration	2a mm	3,2	3,8	4,8	5,6	6,8			
	f Hz	7	6	6	5	5			
1. Max Static	F daN	9,5	8,3	7,1	6,1	5,2			
	d mm	3,7	4,3	5,4	6,4	7,6			
2. Max Shock	F daN	68	60	51	44	37			
	d mm	13	15	19	23	27			
3. Max Vibration	2a mm	1,5	1,7	2,2	2,5	3,1			
	f Hz	10	9	8	7	6			



SHEAR OR ROLL

AP8/SP8 Series	Model	-110	-125	-145	-165	-190			
1. Max Static	F daN	7,0	6,1	5,3	4,5	3,8			
	d mm	6,5	7,7	9,7	11,4	13,7			
2. Max Shock	F daN	45	39	33	28	24			
	d mm	22	26	32	38	45			
3. Max Vibration	2a mm	2,6	3,1	3,9	4,6	5,5			
	f Hz	7	6	6	5	5			

1. Max static load (F) with corresponding deflection (d)
2. Max shock load (F) with corresponding deflection (d)
3. Uncoupled resonant frequency (f) under max static loading 1. and max peak to peak sinusoidal vibration input (2a)

* IMPORTANT: Performance characteristics are given here for reference only. They can be increased under specific conditions. **Contact us.**

TYPICAL SHOCK/VIBRATION SPECIFICATIONS:

Ground Forces	GAM EG13A, SEFT 001, MIL-STD-810, VG 95332.
Air	AIR 7306, MIL-E-5400, MIL-C-172, MIL-STD-810.
Marine	GAM EG13C, IT25-21/96-31/15-86, MIL-S-167, MIL-S-901, STANAG 042, BV 043.73, BV 044.
Others	GAM EMB1, GAM EMBT4, DEF STAN 07-55, IEC 571, FINABEL 2C.